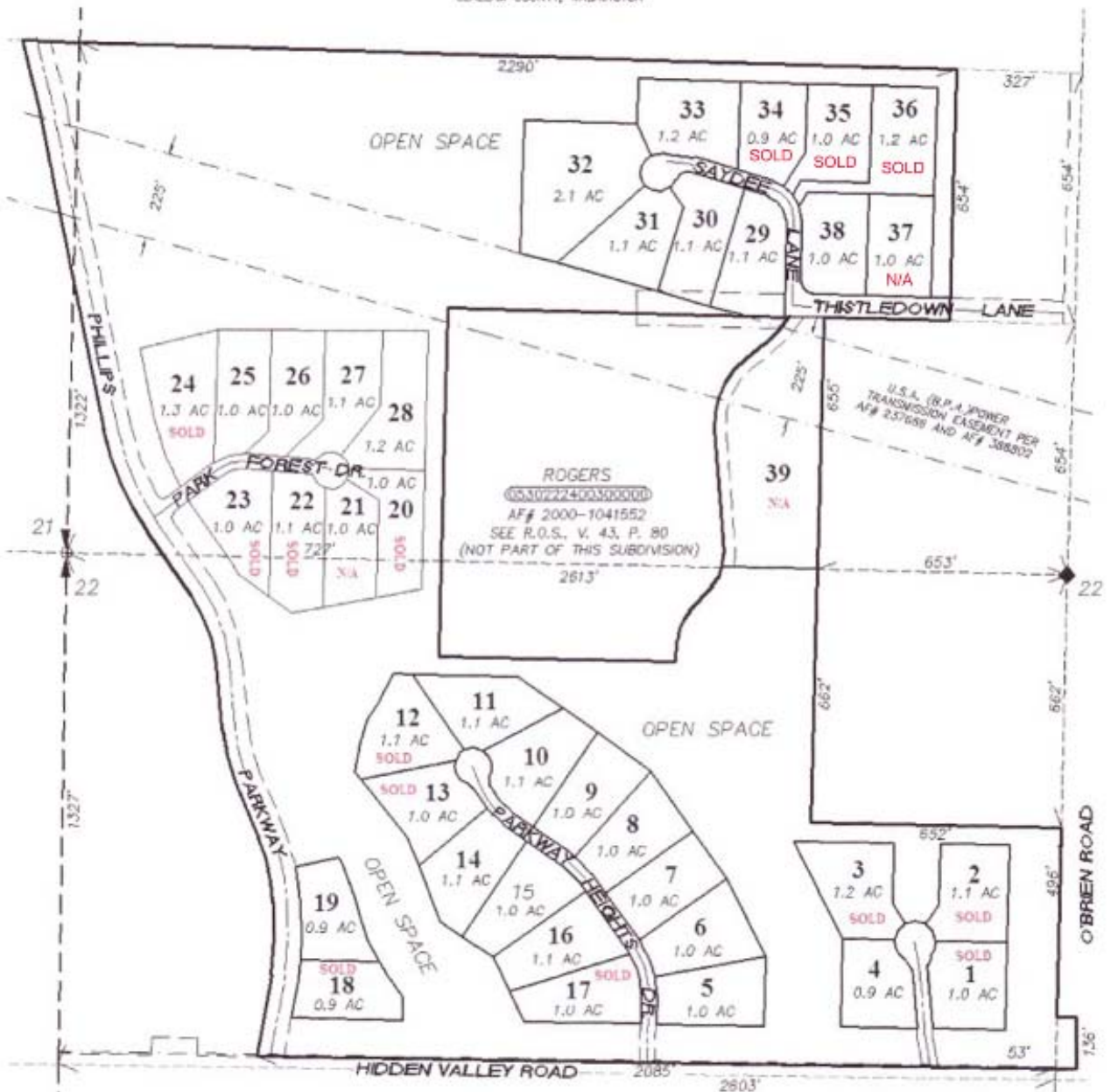


HIDDEN VALLEY PRIVATE ESTATES

BEING A PORTION OF
THE NE 1/4 OF SECTION 21 AND THE
NW 1/4, SE 1/4 AND THE SW 1/4 OF SECTION 22
T. 30 N., R. 5 W., W. M.
CLALLAM COUNTY, WASHINGTON



Contact James Alcaraz 360.808.7355 or jamesthomas@olypen.com

www.FindHiddenValley.com